



**PRODUCT CATALOG**

# CONTENTS

About Us	1
Podium Signage	10
Custom Podiums	12
Podium Size Chart & Lock Options	18
Sneeze Guards	19
Security Boxes	20
Umbrellas	21
Light	21
Podium Covers	22
Replacement Parts	23
Other Equipment	24
Custom Bulk Orders	26
Gallery	27
Testimonials	30
Our Values	31

# About Us

---

The Security Station is the industry leader in designing, manufacturing, and shipping specialty security equipment.

---

Delivering quality equipment on a deadline is our specialty.

---

We have a specialized and dedicated customer service team that understands the needs of the security industry.

---

We have the worlds most comprehensive line of security stations, security boxes and security equipment backed by our industry leading manufacturers warranty.



# Standard Security Podium

STARTING  
FROM **\$868.00**

Economical | All Steel Construction



## Basic Features

- 18 gauge sheet metal
- Scratch-resistant textured black finish
- Equipment storage shelf
- Corrosion resistant hardware (zinc coated)
- Brushed stainless steel working surface
- Umbrella holder for optional umbrella
- 4 Heavy-Duty Locking Casters
- 2 cam locks w/ keys
- Replaceable parts
- Pre-assembled
- Manufacturer's Warranty

**Dimensions:** 24"W x 19"D x 48"H

**Weight:** 110 lbs.

## Upgrade Options

### Door Lock

Combination Lock + \$95.20

Simplex Pushbutton Combination + \$358.40

Schlage Keypad Lock + \$504.00

### Sneeze Guard

3 Panel + \$75.00

### Miscellaneous

Transaction Counter + \$61.60

Cash Tray Drawer Insert + \$72.80

Lock Box + \$67.20

Short Shelf + \$28.00

Long Shelf + \$56.00

## Artwork Upgrades

*see page 17*

Large Magnet + FROM \$205.00

Vinyl Decal + FROM \$275.00

Vinyl Wrap + FROM \$450.00

## Accessories

Podium Cover + \$89.60

Heavy-duty Podium Cover + \$128.80

Umbrella + \$285.60





# White Standard Podium

STARTING FROM **\$868.00**

Economical | All Steel Construction



## Basic Features

- 18 gauge sheet metal
- Scratch-resistant textured white finish
- Equipment storage shelf
- Corrosion resistant hardware (zinc coated)
- Brushed stainless steel working surface
- Umbrella holder for optional umbrella
- 4 Heavy-Duty Locking Casters
- 2 cam locks w/ keys
- Replaceable parts
- Pre-assembled
- Manufacturer's Warranty

**Dimensions:** 24"W x 19"D x 48"H

**Weight:** 110 lbs.

## Upgrade Options

### Door Lock

Combination Lock + \$95.20

Simplex Pushbutton Combination + \$358.40

Schlage Keypad Lock + \$504.00

### Sneeze Guard

3 Panel + \$75.00

### Miscellaneous

Transaction Counter + \$61.60

Cash Tray Drawer Insert + \$72.80

Lock Box + \$67.20

Short Shelf + \$28.00

Long Shelf + \$56.00

### Artwork Upgrades

see page 17

Large Magnet + FROM \$205.00

Vinyl Decal + FROM \$275.00

Vinyl Wrap + FROM \$450.00

### Accessories

Podium Cover + \$89.60

Heavy-duty Podium Cover + \$128.80

Umbrella + \$285.60





## Compact Security Podium

STARTING  
FROM **\$840.00**

Smallest Security Podium | LED Compatible



*Shown above with LED Kit upgrade*

### Basic Features

- Stylish stainless steel accents
- Easy grab handles for portability
- Folding door and drawer handles
- 2 Heavy-Duty Non-Locking Casters
- 2 cam locks w/ 4 keys
- 18 gauge steel
- Scratch-resistant textured black finish
- Umbrella Holder
- Brushed stainless steel working surface
- Pre-assembled
- Replaceable Parts
- Manufacturer's Warranty

**Dimensions:** 18"W x 19"D x 48.5"H

**Weight:** 98 lbs.

### Upgrade Options

#### Door Lock

Combination Lock (Door Lock) + \$95.20

#### Trim Colors

Stainless Steel or Black Trim

#### Sneeze Guard

3 Panel + \$75.00

#### Miscellaneous

Cash Tray Drawer Insert + \$72.80

Lock Box + \$67.20

Shelf + \$39.20

### Artwork Upgrades

*see page 17*

Large Magnet + FROM \$205.00

Vinyl Decal + FROM \$275.00

### Accessories

LED Kit + \$448.00

Podium Cover + \$89.60

Heavy-duty Podium Cover + \$128.80

Umbrella + \$285.60





# Deluxe Security Podium

STARTING  
FROM **\$1,428**

Space-Saving | Enhanced Security | Electronics Ready



## Basic Features

- Countertop with brushed stainless steel trim
- Electronic compatible
- Locking security bar
- Anchor loop
- 16 gauge, heavy-duty sheet metal construction
- Scratch-resistant textured black finish
- Zinc hardware
- Brushed stainless steel working surface
- Umbrella holder
- 4 Heavy-Duty Locking Casters
- 2 cam locks w/ keys
- Replaceable parts
- Pre-assembled
- Manufacturer's Warranty

**Dimensions:** 36.5"W x 24"D x 49"H

**Weight:** 125 lbs.

## Upgrade Options

### Door Lock

Combination Lock + \$95.20

Schlage Key Pad Lock + \$504.00

### Sneeze Guard

3 Panel + \$95.00

### Exterior

LED Kit (No Battery) + \$179.20

LED Kit + \$487.20

Bottom Trim + \$150.00

### Miscellaneous

Short Shelf + \$33.60

Long Shelf + \$61.60

## Artwork Upgrades

*see page 17*

Large Magnet + FROM \$205.00

Vinyl Decal + FROM \$275.00

Vinyl Wrap + FROM \$450.00

## Accessories

Podium Cover + \$89.60

Heavy-duty Podium Cover + \$128.80

Umbrella + \$285.60





# White Deluxe Security Podium

STARTING FROM **\$1,428**

Upscale Look | Enhanced Security | Electronics Ready



## Basic Features

- Countertop with brushed stainless steel trim
- Electronic compatible
- Security Lock Box (white finish) installed
- Locking security bar
- Anchor loop
- 16 gauge, heavy-duty sheet metal construction
- Scratch-resistant textured white finish
- Zinc hardware
- Brushed stainless steel working surface
- Umbrella holder
- 4 Heavy-Duty Locking Casters
- 2 Slam-action locks with 2 keys
- Tip slot
- Replaceable parts
- Pre-assembled
- Manufacturer's Warranty

**Dimensions:** 36.5"W x 24"D x 49"H

**Weight:** 125 lbs.

## Upgrade Options

### Door Lock

Combination Lock + \$95.20

Schlage Key Pad Lock + \$504.00

### Sneeze Guard

3 Panel + \$95.00

### Exterior

LED Kit (No Battery) + \$179.20

LED Kit + \$487.20



### Miscellaneous

Short Shelf + \$33.60

Long Shelf + \$61.60

## Artwork Upgrades

**see page 17**

Large Magnet + FROM \$205.00

Vinyl Decal + FROM \$275.00

Vinyl Wrap + FROM \$450.00

## Accessories

Podium Cover + \$89.60

Heavy-duty Podium Cover + \$128.80

Umbrell + \$285.60





# Heavy Duty Deluxe Security Podium

STARTING  
FROM **\$2,912**

Space-Saving | Enhanced Security | Electronics Ready



## Basic Features

- 9 gauge, heavy-duty sheet metal construction (Door)
- 16 gauge, heavy-duty sheet metal construction (Rest of the podium)
- Countertop with brushed stainless steel trim
- Scratch-resistant textured black finish
- Zinc hardware
- Prybar defense plates
- Locking security bar
- Schlage door lock
- Anchor loop
- 2 Locking, 2 Non-Locking Heavy-Duty Casters
- Umbrella holder
- Electronic device compatible
- LED Compatible
- Replaceable parts
- Pre-assembled
- Manufacturer's Warranty
- Please note the Heavy Duty Deluxe Podium should never be left unattended.

**Dimensions:** 38.5"W x 24.5"D x 50"H

**Weight:** 250 lbs.

## Upgrade Options

### Exterior

LED Kit (No Battery) + \$179.20

LED Kit + \$487.20

### Sneeze Guard

3 Panel + \$106.40

### Miscellaneous

Long Shelf + \$61.60



## Artwork Upgrades

**see page 17**

Large Magnet + FROM \$205.00

Vinyl Decal + FROM \$275.00

Vinyl Wrap + FROM \$450.00

## Accessories

Podium Cover + \$89.60

Umbrella + \$285.60



# Portable Professional Security Desk

STARTING  
FROM **\$2,968**

Electronics Ready | Modern Appearance | LED Compatible



## Basic Features

- Modern, curved appearance with stainless steel accents
- Convex front panel and curved side panels
- Brushed stainless steel transaction counter
- Stainless steel counter with electronics slot
- Recessed stainless steel accent on front panel
- Stainless steel kick plate that conceals casters
- Vented cage for PC tower
- Electronics Ready
- Scratch-resistant textured black finish
- Corrosion resistant hardware (zinc coated)
- Brushed stainless steel working surface
- Umbrella holder
- 2 Locking, 2 Non-Locking Heavy-Duty Casters
- 4 cam locks w/ keys
- Tip Slot
- Replaceable parts
- Pre-assembled
- Manufacturer's Warranty

**Dimensions:** 47"W x 27"D x 51"H

**Weight:** 350 lbs.

## Upgrade Options

### Door Lock

Combination Lock + \$190.40

Schlage Key Pad Lock + \$840.00

### Exterior

LED Kit + \$487.20

### Sneeze Guard

3 Panel + \$107.50

### Miscellaneous

Long Shelf + \$75.00

PC Wall + \$61.60



## Artwork Upgrades

**see page 16**

Large Magnet + FROM \$285.00

Vinyl Decal + FROM \$350.00

Vinyl Wrap + FROM \$460.00

## Accessories

USB Charging Station + \$50.00

Podium Cover + \$106.40

Heavy-Duty Podium Cover + \$179.20

Umbrella + \$285.60



## **NEW** The Boss 500 Security Desk

STARTING  
FROM **\$3,332**



### **Basic Features**

- Kick plate that conceals casters
- Keyboard drawer/tray option
- Vented base for PC wall
- Double wide (53" total width)
- Tip box installed
- Scratch-resistant textured black finish
- Corrosion-resistant hardware (zinc-coated)
- Brushed stainless steel working surface
- Umbrella holder
- 2 Locking, 2 Non-Locking Heavy-Duty Casters
- 4 slam-action locks w/ 2 keys
- Tip Slot
- Electronics Ready
- Replaceable parts
- Arrives fully assembled
- Manufacturer's Warranty

**Dimensions:** 53"W x 28"D x 49.5"H

**Weight:** 350 lbs.

### **Interior Upgrades**

#### **Door Lock**

Schlage Key Pad Lock + \$840.00

#### **Miscellaneous**

Shelf + \$72.80

PC Wall + \$61.60

### **Exterior Upgrades**

Curved Counter + \$84.00

LED Kit (No Battery) + \$179.20

LED Kit + \$487.20

Sneeze Guard + \$120.40

### **Counter Trim Colors**

Stainless

Black

Bronze + \$84.00

Gold + \$84.00

### **Artwork Upgrades**

Large Magnet + FROM \$285.00

Vinyl Decal + FROM \$350.00

Vinyl Wrap + FROM \$515.20

### **Accessories**

Podium Cover + \$106.40

Heavy-Duty Podium Cover + \$179.20

Umbrella + \$285.60



## **NEW** The Boss 500 Security Desk (White)

STARTING  
FROM **\$3,332**



### **Basic Features**

- Kick plate that conceals casters
- Keyboard drawer/tray option
- Vented base for PC wall
- Double wide (53" total width)
- Tip box installed
- Scratch-resistant textured white finish
- Corrosion-resistant hardware (zinc-coated)
- Brushed stainless steel working surface
- Umbrella holder
- 2 Locking, 2 Non-Locking Heavy-Duty Casters
- 4 slam-action locks w/ 2 keys
- Tip Slot
- Electronics Ready
- Replaceable parts
- Arrives fully assembled
- Manufacturer's Warranty

**Dimensions:** 53"W x 28"D x 49.5"H

**Weight:** 350 lbs.

### **Interior Upgrades**

#### **Door Lock**

Schlage Key Pad Lock + \$840.00

#### **Miscellaneous**

Shelf + \$72.80

PC Wall + \$61.60

### **Exterior Upgrades**

Curved Counter + \$84.00

LED Kit (No Battery) + \$179.20

LED Kit + \$487.20

Sneeze Guard + \$120.40

### **Counter Trim Colors**

Stainless

White

Bronze + \$84.00

Gold + \$84.00

### **Artwork Upgrades**

Large Magnet + FROM \$285.00

Vinyl Decal + FROM \$350.00

Vinyl Wrap + FROM \$515.20

### **Accessories**

Podium Cover + \$106.40

Heavy-Duty Podium Cover + \$179.20

Umbrella + \$285.60



# CUSTOM PODIUMS

Custom Deluxe Podium



Custom Portable Professional Desk



*Shown above with optional Laminate Panels & Curved Counters*

## Sample Customizations





# Custom Deluxe Security Podium

STARTING  
FROM **\$2,408**

Customizable Panels | Enhanced Security | Electronics Ready



## Basic Features

- Countertop with brushed stainless steel trim
- Interchangeable panels available in white acrylic, colored acrylic or custom laminate
- Electronic compatible
- Locking security bar
- Anchor loop
- 16 gauge, heavy-duty metal frame
- Scratch-resistant textured black finish frame
- Zinc hardware
- Brushed stainless steel working surface
- Umbrella holder for optional umbrella
- 2 Locking, 2 Non-Locking Heavy-Duty Casters
- 2 cam locks w/ keys
- Replaceable parts
- Pre-assembled
- Manufacturer's Warranty

**Dimensions:** 36.5"W x 24"D x 49"H

**Weight:** 140 lbs.

## Interior Upgrades

### Door Lock

- Combination Lock + \$95.20
- Simplex Pushbutton Combination + \$358.40
- Schlage Key Pad Lock + \$504.00

### Miscellaneous

- Cash Tray Drawer Insert + \$72.80
- Lock Box + \$67.20
- Short Shelf + \$33.60
- Long Shelf + \$61.60

## Exterior Upgrades

- Counter Trim Color (Stainless or Black)
- Curved Counter + \$56.00
- Laminate Panels + 1,103.20
- LED Lighted + \$487.20

## Artwork Upgrades

- Vinyl Print + FROM \$285.00
- Acrylic Standoff Sign + \$952.00
- LED Sign (No Battery) + \$1,148.00
- LED Sign (see p16) + \$1,456.00

## Accessories

- Podium Cover + \$89.60
- Heavy-duty Podium Cover + \$115.00
- Umbrella + \$285.60



# Custom Portable Professional Security Desk

STARTING FROM **\$3,920**

Doublewide | Customizable | Electronics Ready



## Basic Features

- Kick plate that conceals casters
- Keyboard drawer/tray option
- Vented base for PC wall
- Double wide (53" total width)
- Scratch-resistant textured black finish
- Corrosion-resistant hardware (zinc-coated)
- Brushed stainless steel working surface
- Umbrella holder
- 2 Locking, 2 Non-Locking Heavy-Duty Casters
- 4 slam-action locks w/ 2 keys
- White acrylic panels
- Electronics Ready
- Replaceable parts
- Arrives fully assembled
- Manufacturer's Warranty

**Dimensions:** 53"W x 28"D x 49"H

**Weight:** 350 lbs.

## Upgrade Options

### Door Lock

Schlage Key Pad Lock + \$840.00

### Miscellaneous

Shelf + \$72.80

PC Wall + \$61.60

### Exterior Upgrades

Curved Counter + \$84.00

Laminate Panels + \$840.00

LED Kit (No Battery) + \$179.20

LED Kit + \$487.20

## Counter Trim Colors

Stainless Trim

Black Trim

Bronze Trim + \$84.00

Gold Trim + \$84.00

## Artwork Upgrades

Vinyl Print + FROM \$350.00

Acrylic Standoff Sign + \$1,008.00

LED Sign (No Battery) + \$1,204.00

LED Sign (see p16) + \$1,512.00

## Accessories

Sneeze Guard + \$120.40

Podium Cover + \$106.40

Heavy-Duty Podium Cover + \$179.20

Umbrella + \$285.60



## White Custom Portable Professional Security Desk

STARTING  
FROM **\$3,920**

Doublewide | Customizable | Electronics Ready



### Basic Features

- Kick plate that conceals casters
- Vented base for PC wall
- Double wide (53" total width)
- Scratch-resistant textured white finish
- Corrosion-resistant hardware (zinc-coated)
- Brushed stainless steel working surface
- Umbrella holder
- 2 Locking, 2 Non-Locking Heavy-Duty Casters
- 4 slam-action locks w/ 2 keys
- White acrylic panels
- Electronics Ready
- Replaceable parts
- Arrives fully assembled
- Manufacturer's Warranty

**Dimensions:** 53"W x 28"D x 49"H

**Weight:** 350 lbs.

### Interior Upgrades

#### Door Lock

Schlage Key Pad Lock + \$840.00

#### Miscellaneous

Shelf + \$72.80

PC Wall + \$61.60

### Exterior Upgrades

Curved Counter + \$84.00

Laminate Panels + \$840.00

LED Kit (No Battery) + \$179.20

LED Kit + \$487.20

### Counter Trim Colors

Stainless Trim

White Trim

Bronze Trim + \$84.00

Gold Trim + \$84.00

### Artwork Upgrades

Vinyl Print + FROM \$350.00

Acrylic Standoff Sign + \$1,008.00

LED Sign (No Battery) + \$1,204.00

LED Sign (see p16) + \$1,512.00

### Accessories

Sneeze Guard + \$120.40

Podium Cover + \$106.40

Heavy-Duty Podium Cover + \$179.20

Umbrella + \$285.60



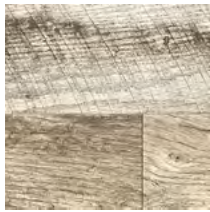
## Custom Podiums in Laminate Panels



### Laminate Options



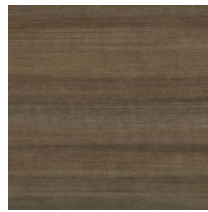
Antique Tobacco  
Pine



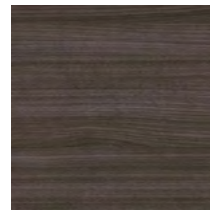
Rediscovered Oak  
Planked



Fawn Cypress



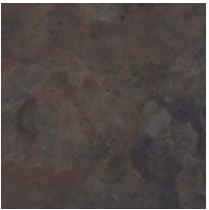
Studio Teak



Skyline Walnut



Continental Walnut



Rustic Slate



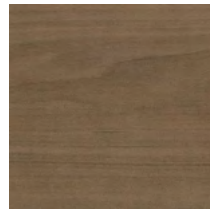
Forged Steel



Madagascar



Jubilee Oak



French Pear



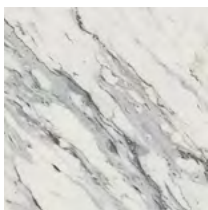
Ashbee Oak



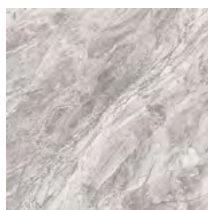
White Driftwood



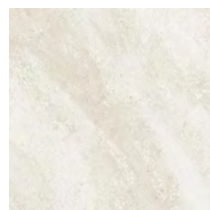
Antique Marula  
Pine



Calcutta Marble



Brazilian Grey



Beachwalk



Glacier Quartzite

More laminate options available at [Wilsonart](http://Wilsonart.com).  
Contact us for Pricing, Availability and Delivery Times.

## LED Sign for Custom Podiums

Our LED signs are comprised of clear acrylic with three types of design application: Laser-cut laminate, Etched acrylic, and Printed acrylic. The design application will ultimately be determined by the complexity of the logo provided.



### Laser-cut laminate

Best for simple designs with thicker linework in one or two colors.



### Etched acrylic

Best for more complex logos with fine linework – can be mixed with laser-cut portions to increase visibility and add visual interest.



### Printed acrylic

Best for multicolored logos and use with or without LEDs.



The strong, professional look of the custom LED backlit sign is enhanced when the sign is mounted to your Custom Portable Professional Desk with 1.5" silver stand-offs. The look is completed with remote-controlled, color-changing LED lighting that creates a "halo" effect on your sign.

The LED kit is powered by a rechargeable cordless battery system with an 8-hour charge cycle. If you need to light up the station for longer than 8 hours, it can be plugged directly into an electrical outlet. The LED kit also comes with a remote operated controller which has multiple speed, brightness, and color settings.

### LED Kit includes

- 8 Color options: Red, Orange, Yellow, Blue, Cyan, Purple, White Green
- LED strips with multiple color options
- Sealed, 8 hour rechargeable battery w/ power supply
- Easy-to-use controller and remote

Available only on Custom Podiums

Sign sizing: 16"x24"



Don't want it backlit? Ask us for pricing on a sign without LEDs.

# PODIUM SIGNAGE

## Vinyl Decal



This is a great option for simple logo decals or text without extensive details or backgrounds. The background color will be the color of the podium panel.

\*Can be done on all podiums.

### Standard Podium

Front \$275 | Front & 1 Side \$355 | Front & Both Sides \$435

### Compact Podium

Front \$275 | Front & 1 Side \$355 | Front & Both Sides \$435

### Deluxe Podium

Front \$275 | Front & 1 Side \$355 | Front & Both Sides \$435

### Professional Desk & The Boss 500 Desk

Front \$350 | Front & 1 Side \$475 | Front & Both Sides \$600

## Vinyl Wrap



This is a great option for larger, more complex designs or designs that require a specific background color other than the color of the podium panel.

### Standard Podium

Front \$450 | Front & Both Sides \$690

### Deluxe Podium

Front \$450 | Front & Both Sides \$690

### Professional Desk

Front \$460 | Front & Both Sides \$845

### The Boss 500 Desk

Front \$515.20 | Front & Both Sides \$946.40



## PODIUM SIGNAGE

### Large Magnet



#### Standard Podium

Front **\$205** | Front & Both Sides **\$445**

#### Compact Podium

Front **\$205** | Front & 1 Side **\$325** | Front & Both Sides **\$445**

#### Deluxe Podium

Front **\$205** | Front & 1 Side **\$325** | Front & Both Sides **\$445**

#### Professional Desk & The Boss 500 Desk

Front **\$285** | Front & 1 Side **\$465** | Front & Both Sides **\$645**

This is a great option for those who want a specific background color but don't want to permanently affect the podium itself.

Our magnets cover the full face of whatever side they are applied to and are fully removeable if you decide to use the podium for other uses or companies.

\*Not recommended for Custom Deluxe or Custom Professional podiums

### Vinyl Print



#### Custom Deluxe Podium

Front **\$285** | Front & Both Sides **\$410**

#### Custom Professional Desk

Front **\$350** | Front & Both Sides **\$450**

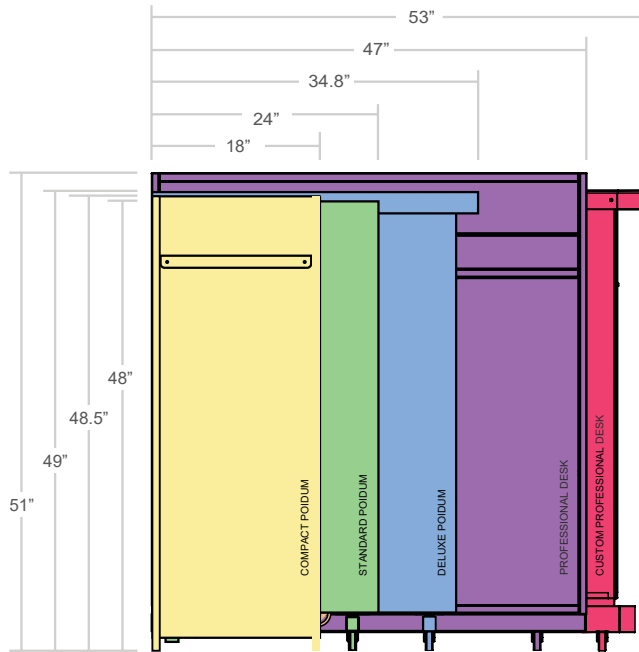
Vinyl print: choice of decal or wrap. Vinyl Decal is a great option for simple logo decals or text without extensive details or backgrounds.

The background color will be the color of the podium panel. Vinyl Wrap is a great option for larger, more complex designs or designs that require a specific background color other than the color of the podium panel. Wrapping will only be done on the panel inserts.

Framing will remain original color.



# PODIUM SIZE CHART & LOCK OPTIONS



	Key Cam Lock	Combination Cam Lock	Simplex Pushbutton	SCHLAGE FE595
<b>Compact Podium</b>	✓	✓		
<b>Standard Podium (Black &amp; White)</b>	✓	✓	✓	✓
<b>Deluxe Podium</b>	✓	✓	✓	
<b>White Deluxe Podium</b>	✓	✓		✓
<b>Heavy Duty Deluxe Podium</b>				✓
<b>Custom Deluxe Podium</b>	✓	✓	✓	
<b>Professional Desk (Black &amp; White)</b>	✓	✓		✓
<b>Custom Professional Desk (Black &amp; White)</b>	✓			✓
<b>The Boss 500 Desk (Black &amp; White)</b>	✓			✓



## Key Cam Lock

Cam lock needs to be manually locked. Option for keyed alike and keyed different.



## Simplex Pushbutton Combination Lock

Keyless entry. Push in the combination to access. Locks automatically when door is closed. Fast keyless entry, resettable combination, no keys to manage.



## Combination Cam Lock

Access with the master key or dial in the 4 digit combination. Must be manually locked and does not have the ability to be "slam locked". Resettable combination w/ master key helps with keeping track of multiple keys.



## SCHLAGE FE595 Keypad Entry

Convenient and secure keyless access which locks automatically when door is shut. Program up to 19 user codes to fit your security needs. Battery operated keypad lights up for visibility at night. 3 year battery life.



# SNEEZE GUARDS

Add a sneeze guard to your purchase of the podiums listed below. Or buy a countertop shield and retrofit it to a podium you already have.

Protect employees and customers with acrylic countertop shields from The Security Station. These social distancing barriers – also called sneeze guards – add .22" of protection from harmful airborne particles. Countertop shields are especially important as businesses begin to reopen after Covid-19 closures. Our new sneeze guards extend each podium to a total height of 6' and are up to 28" wide depending on the model.



## 3 Panel Sneeze Guards



Compact Podium ~~\$150~~ **\$75.00**

Standard Podium ~~\$150~~ **\$75.00**

Deluxe Podium ~~\$190~~ **\$95.00**

Heavy Duty Deluxe Podium ~~\$190~~ **\$106.40**

Professional Desk ~~\$215~~ **\$107.50**

Custom Professional Desk ~~\$215~~ **\$120.40**

The Boss 500 Desk ~~\$215~~ **\$120.40**





# SECURITY BOXES

## Small Security Box

STARTING  
FROM \$195



- 24 Key hook capacity
- Cam lock
- 18 gauge steel
- Textured powder coat finish
- Manufacturer's Warranty

### Dimensions:

18" W x 6" D x 21.5" H

**Weight:** 20 lbs.

### Door Lock Option

Combination Lock + \$95.00

## 5" Drawer Security Lock Box

\$67.20



- Large slot for inserting cash, checks, tickets, etc.
- Easily mountable to wall or in any of our security podiums
- Black textured powder coating
- Each box is keyed differently
- Heavy duty construction

### Dimensions:

5" W x 4" D x 11" H

**Weight:** 4 lbs.



## 50 Wood Key Board w/ Frame

\$109.95



- 50 key capacity
- High quality wood laminate
- Pre-Drilled Mounting Holes
- Staggered key hooks w/ white, screen printed numbers
- Available in Black & Asian Night finish
- Metal frame with black finish
- Manufacturer's Warranty

### Dimensions:

23.5" W x 1.25" D x 25.254" H

**Weight:** 22 lbs



# UMBRELLAS



## Security Station Umbrellas \$285

- 7.5' umbrella
- Aluminum pole and fiberglass ribs for maximum durability
- Manual pulley system for easy opening
- Vibrant polyester canvas
- 1.5" Pole diameter
- 2-year fade protection on the canvas

Our valet umbrellas are a great way to add a little class to your valet operation and help draw the attention of your customers. Each umbrella features an aluminum pole and fiberglass ribs which are more durable than traditional wood valet umbrellas.



## Black, Dark Blue & Maroon \$285

2-year fade protection on the canvas

# LIGHT



## Tap Light \$40.00

- 24 long lasting LED lights
- Bulb life of 30,000 hours
- Powered by (3) AA normal or rechargeable batteries (batteries not included)
- 5 LEDs per Tap Light to cast a bright light
- Includes double-sided tape for easy installation
- One touch activation





# PODIUM COVERS



## Professional Security Desk Cover

\$106.40

For use with our Professional Desk

- Weather-resistant
- 2-ply construction
- Locking eyelets
- Umbrella Pouch



## Heavy Duty Podium Cover

Standard/Compact/Deluxe Podiums \$128.80

Professional Desks \$179.20

- Weather-resistant
- 2-ply construction
- Locking eyelets
- Umbrella Pouch



## Security Podium Cover

\$89.60

For use with our Standard & Compact Security Podiums

- Weather-resistant
- 2-ply construction
- Locking eyelets
- Umbrella Pouch



## Deluxe Podium Cover

\$89.60

For use with our Deluxe Podium

- Weather-resistant
- 2-ply construction
- Locking eyelets
- Umbrella Pouch



# REPLACEMENT PARTS

Replace parts, not podiums. We believe that makes more sense.



## Heavy Duty Casters

**(4 pack)** \$89.60

**(2 pack)** \$50.40



## Drawer Tracks

(Sets of 2, fixes one drawer)

\$22.40



## Door/drawer handles (2-pack)

\$19.04



## Key Cam Lock

\$23.52



## Combination Lock

\$95.20



## Metal Slam-Action Key Lock

\$20.72



## Short Shelf

for Standard

\$28.00

## Long Shelf

for Standard

\$56.00

for Deluxe

\$61.60

for Professional

\$75.00

# OTHER EQUIPMENT



## Portable Power Station

**BLUETTI AC50B – 700W 448Wh**

**\$399.00**

Portable | Durable | Lightweight

- Reliable Powerhouse: 448Wh capacity for extended battery life ;
- Unmatched Output: 700W continuous power, 1,000W lifting power ;
- Smart Turbo Charging: 0-80% capacity in just 45 minutes ;
- Built to Last: Ultra-safe LiFePO4 battery with 3,000+ life cycles ;
- Solar-Ready: Pass-through charging, harness solar energy efficiently ;
- 6 Ways to Recharge: Flexible to get charged via AC, solar, car, generator, B80 battery, or dual AC + solar ;
- Smart Control: Monitor and manage via the BLUETTI App ;
- Peace of Mind: Backed by an industry-leading 5-year warranty.



**SALE!**

**48000 BTU Outdoor Patio Heater**

~~\$92.50~~ **\$80.00**

- Stainless Steel
- Can accommodate 20lb tank (not included)
- 100 sq ft area coverage (10ft x 10ft)
- 1-Year Warranty



**Cash Tray  
Drawer Insert**

**\$72.80**

**Dimensions:**  
12"W x 10"D x 2"H



**4-Port USB Charging  
Station**

**\$50.00**



Front

Back



**Delineator Sign Base  
20lb Base Black Panel**

3-pack **\$307**  
6-pack **\$600**  
12-pack **\$1,170**



**Reliable equipment.  
100% Guaranteed.**

---

The Security Station will replace any broken part or product resulting from a defect in workmanship within the first three years.

**It is our mission at The Security Station to constantly seek out new ways to provide value for you, our customer.**

When we asked ourselves how we could do a better job of that, we realized that nothing would go further than offering you a manufacturer's guarantee on all of our products.

It ensures we're holding ourselves to the highest standards throughout the design and manufacturing process.

More importantly, it gives you the peace of mind that you're buying products of superior quality, design and craftsmanship.

The Security Station will replace any broken part or product resulting from a defect in workmanship within the first three years.

[Read the Full Details of our Manufacturer's Warranty here.](#)





# CUSTOM BULK ORDERS

We have in house design and manufacturing, as well as the resources to ship freight all over the country. If you need at least 40 custom security podiums or desks, we can design and manufacture them for you. Also, in many cases, we can manage the logistics of your custom product line or bulk order.

Lead times vary depending on the quantity ordered and the nature of the custom request. To consider a project, we require a minimum of 90 days from when the design is completed to delivery.

# GALLERY



# GALLERY





# GALLERY







# TESTIMONIALS



*"[The Standard Podiums] are fantastic... They are **great quality** and serve exactly what we needed them for"* - **Michael Venuto, US Airways**



*"We have received the podium and are happy with the results! Thank you again for your help."* - **Jessie, MountainGate Country Club**



*"We got the Professional Security Desk and it is fantastic! The size is **exactly what we were looking for and it fits in with the aesthetics of our lounge.** Thank you for another great piece!"*

- **Mike, Willows Lodge**



*"We received the Professional Security Desk this morning. I wanted to let you know that the **shipment was in great condition and it was well packed for the long trip**, we were very pleased."* - **Bryann B., UPMC Mercy Hospital**



*"The podium looks great!"* - **Miguel, Hotel Monteleone**



*"The Professional Security Desk is wonderful...It's exactly what we were looking for."*  
- **Russel, The Hilton Indianapolis**

# Our Values

---

Premium Quality Products

Unrivaled Value

Long-lasting Durability

Premium Custom Security Podiums

Superior Customer Service

Fast Processing And Shipping

---

THANK YOU FOR VIEWING OUR CATALOG.

**Call Us** at 877-740-4538

**Email Us** at [sales@thesecuritystation.com](mailto:sales@thesecuritystation.com)  
for more information or a quote

View the latest copy of the catalog at  
<https://www.thesecuritystation.com/catalog/>



San Diego, CA

[www.thesecuritystation.com](http://www.thesecuritystation.com)

May 2025